

LinkVis

GIS for Transport and Supply Networks

WHY GIS?



Visualise complex relationships



Optimise workflow systematically



Promote interdisciplinary approaches



Identify and reduce risks



GIS is the answer to "Where?"

WHY LINKVIS?



Flexible multi-layer representation



Create, manage and save GIS data



Connect to multiple business applications and workflows



Reproducible results



State-of-the-art components for an outstanding user experience

BENEFITS



Save time through flexibility in the workflow model



Cut costs by reducing complexity



Increase efficiency through process optimisation



Earn trust with transparency



Network realisation is audit-compliant and verifiable

LinkVis

GIS for Transport and Supply Networks

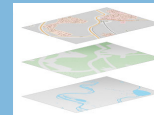


Representation of supply and telecommunications networks



Supply and telecommunications networks can be modelled in LinkVis using a transaction model, freely configurable attributes, editing tools etc.

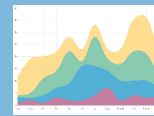
Data management can be performed easily and cost-efficiently via mass data maintenance with established methods like Excel import, REST or SOAP.



GIS framework

Geographic information systems (GIS) support you in making the right decision by visualising complex relationships.

Abstract units of information are placed in layers one above the other and correlated.



Data analytics & reporting module

Since we combine the powerful representations from the GIS component with our analytics engine, we are able to generate meaningful reports.

It is easily possible to produce e.g. a risk or potential analyses for a supply or telecommunications network based on these analytics data.